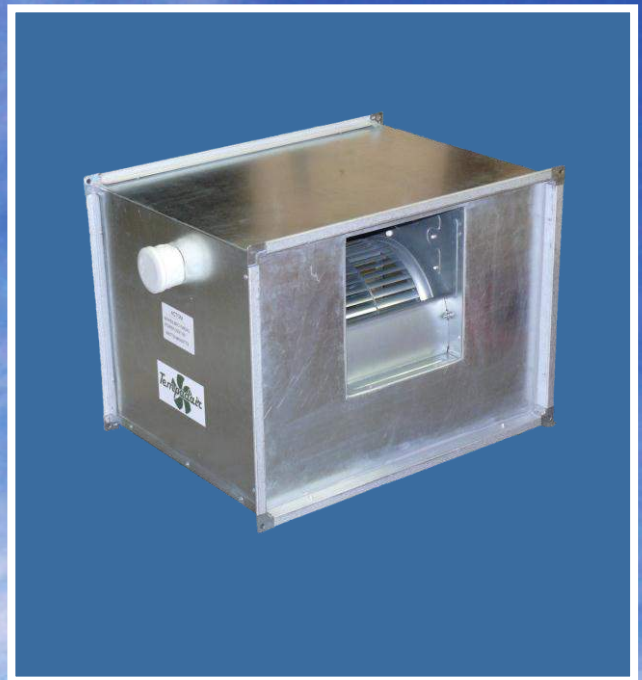


*Rectangular  
Boxed Fans - BFC*



## BFC Rectangular Boxed Fans

BFC fans offer a silent operating range of fans, designed to deliver flow rates up to 4800m<sup>3</sup>/h at medium operating pressures.

The design of the unit makes the installation simple and easy with the fan supplied fitted with MEZ flanges. A total of 12 models are available from the range. All D43 and D63 models are fitted with 3 speed fans.



Typical installation and uses would include office ventilation, smoking room extract and supply, restaurants, fresh air supply etc.

The entire range offered is suitable for 220V 1Ph 50Hz power supply and operating conditions from -10°C ~ 40°C.

All models are fitted with thermal protection embedded in the motor winding.

## Construction

The range of BFC fans are manufactured from pre-galvanised material. The fan assembly is fitted with MEZ flanges on both the inlet and the discharge side of the fan unit for easy installation.

Matching sound attenuators, manufactured from pre-galvanised material, fitted with MEZ flanges are available upon request.

Access panel and other material grade casings are available upon request.

## Specifications

Model	Watts	Amps	Rpm	Mass [kg]
BFC77D41 (1)	280 / 200 <sub>1</sub> / 160 <sub>1</sub>	2.0 / 1.7 <sub>1</sub> / 1.4 <sub>1</sub>	1370 / 1260 <sub>1</sub> / 1160 <sub>1</sub>	18
BFC88D41 (1)	300 / 220 <sub>1</sub> / 180 <sub>1</sub>	2.8 / 2.0 <sub>1</sub> / 1.7 <sub>1</sub>	1350 / 1260 <sub>1</sub> / 1080 <sub>1</sub>	22
BFC97D43	380 / 300 / 220	3.2 / 2.2 / 1.9	1330 / 1260 / 1080	25
BFC97D63	180 / 130 / 120	1.9 / 1.3 / 1.2	890 / 830 / 770	25
BFC99D43	550 / 380 / 260	4.5 / 3.0 / 2.5	1360 / 1260 / 1180	27
BFC99D63	200 / 150 / 130	2.2 / 1.6 / 1.3	890 / 810 / 750	27
BFC108D43	980 / 780 / 700	6.8 / 5.1 / 4.6	1390 / 1280 / 1200	33
BFC108D63	400 / 280 / 210	2.6 / 1.9 / 1.6	880 / 830 / 750	29
BFC1010D43	1100 / 850 / 780	7.2 / 5.5 / 5.2	1380 / 1260 / 1180	35
BFC1010D63	450 / 330 / 250	3.0 / 2.0 / 1.7	890 / 820 / 740	32
BFC129D63	700 / 450 / 400	5.5 / 3.9 / 3.4	900 / 840 / 780	43
BFC1212D63	750 / 500 / 420	5.8 / 4.8 / 3.5	890 / 820 / 760	45

Note 1 - BFC 77 & 88 available in 3 speed on request

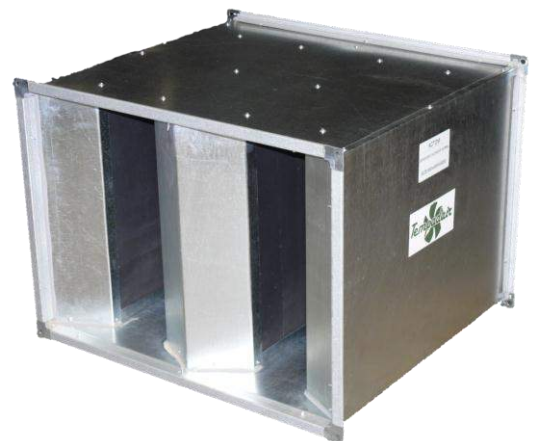


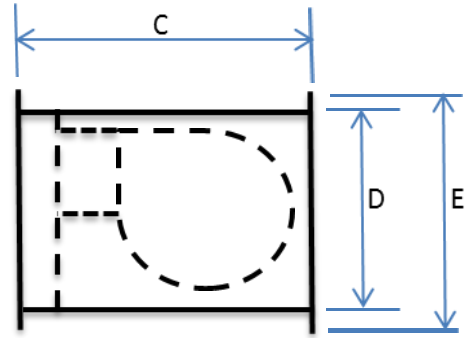
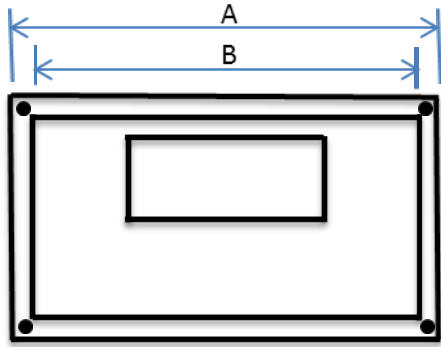
## Noise Data

Model	Sound Power Level								dBa @ 3m
	63	125	250	500	1K	2K	4K	8K	
BFC77D41	95	91	87	84	82	78	73	68	66
BFC88D41	94	89	85	81	79	75	70	66	64
BFC97D43	55	69	75	75	78	76	75	67	62
BFC97D63	47	62	67	68	70	69	68	60	55
BFC99D43	60	67	79	78	80	81	80	72	66
BFC99D63	52	59	71	70	72	73	72	64	58
BFC108D43	58	66	79	77	80	79	79	69	65
BFC108D63	53	60	73	72	74	73	73	63	59
BFC1010D43	65	75	81	80	83	82	81	72	68
BFC1010D63	58	68	75	74	77	75	74	66	61
BFC129D63	52	69	75	77	79	78	76	69	63
BFC1212D63	62	70	74	80	77	77	75	66	63

## Attenuator - 900L

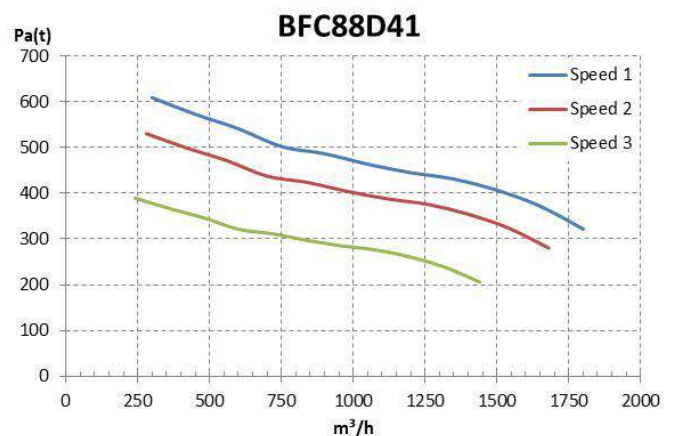
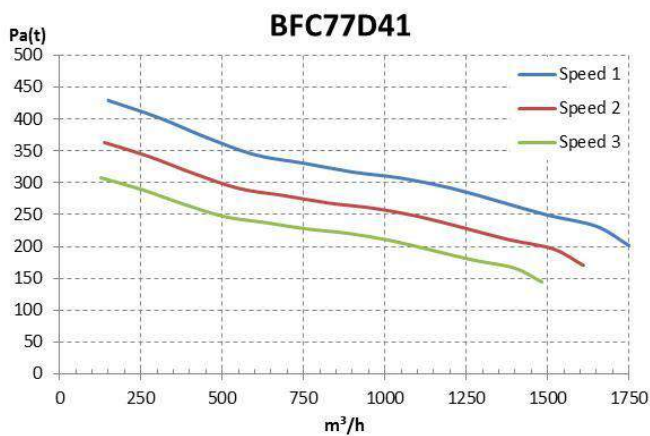
Models	BFC77	BFC88 BFC97 BFC99	BFC108 BFC1010	BFC129 BFC1212
Frequency				
63	6	5	4	4
125	11	9	7	8
250	19	16	13	12
500	34	30	25	31
1K	45	39	32	45
2K	45	39	32	40
4K	39	31	23	33
8K	28	26	15	29
Mass (kg)	37	39	42	54





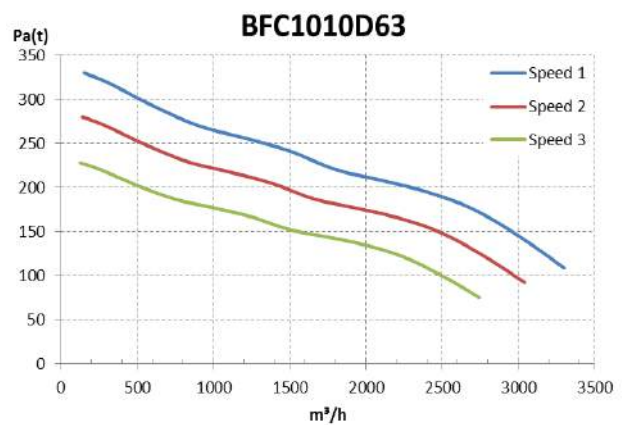
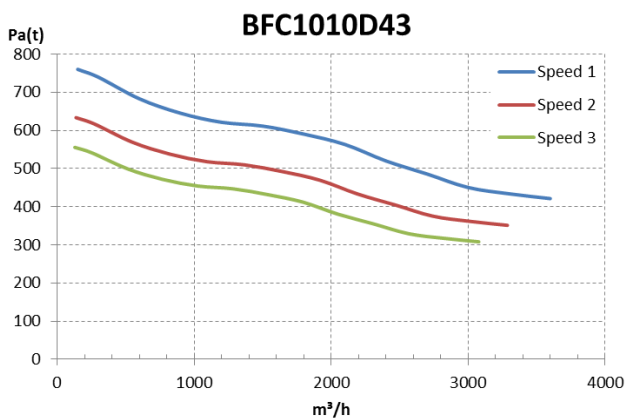
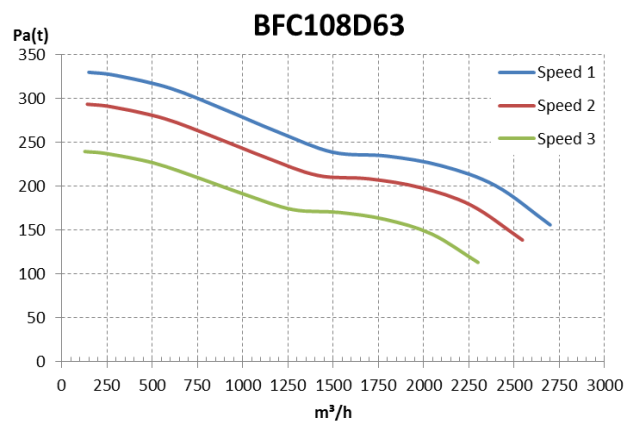
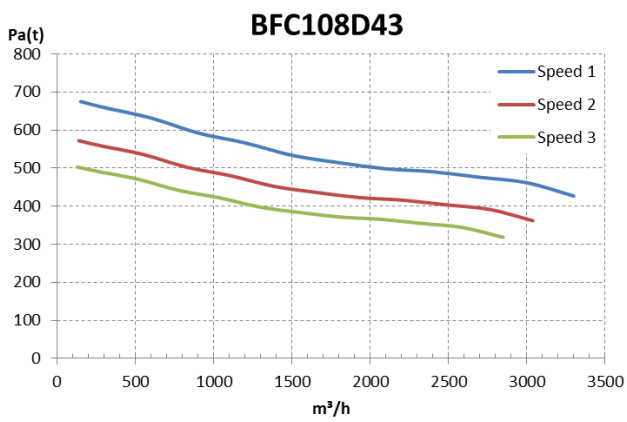
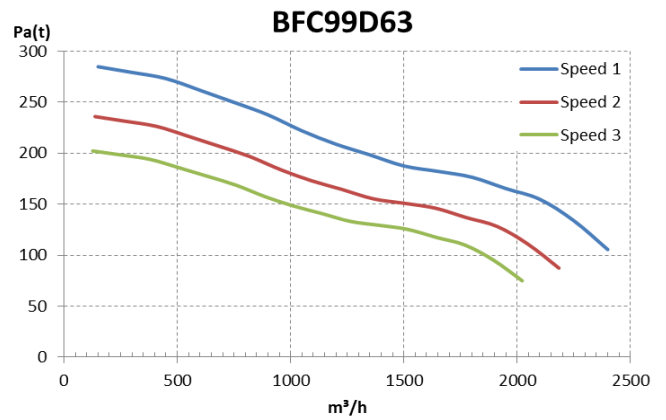
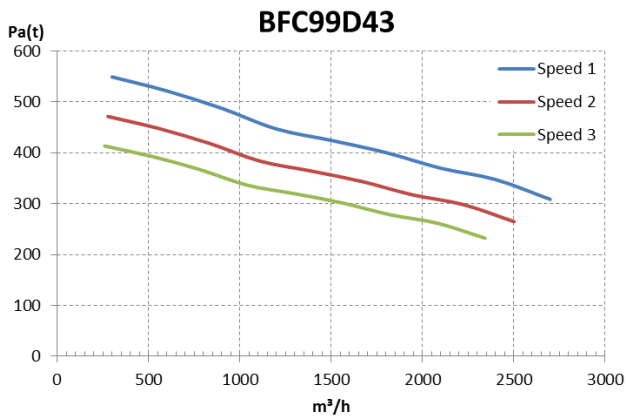
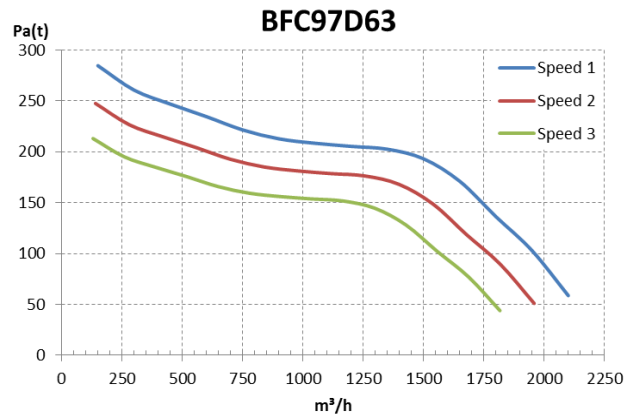
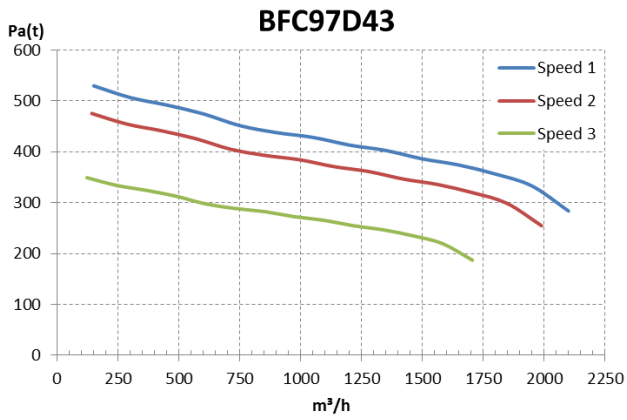
Model	All dimensions in mm					Mass kg
	A	B	C	D	E	
BFC77D41	590	550	450	380	420	18
BFC88D41	640	600	450	410	450	22
BFC97D43	640	600	450	410	450	25
BFC97D63	640	600	450	410	450	25
BFC99D43	640	600	450	410	450	27
BFC99D63	640	600	450	410	450	27
BFC108D43	690	650	500	465	505	33
BFC108D63	690	650	500	465	505	29
BFC1010D43	690	650	500	465	505	35
BFC1010D63	690	650	500	465	505	32
BFC129D63	765	725	600	550	590	43
BFC1212D63	765	725	600	550	590	45

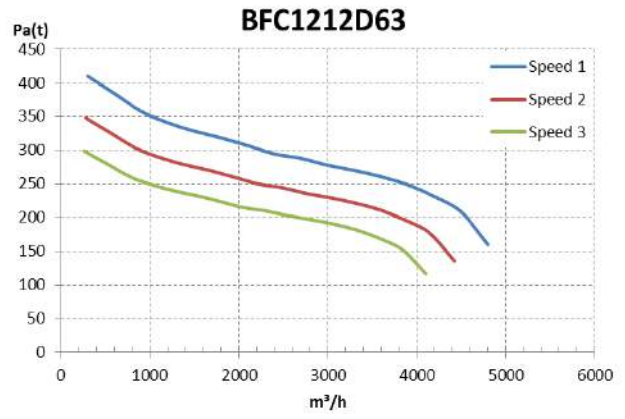
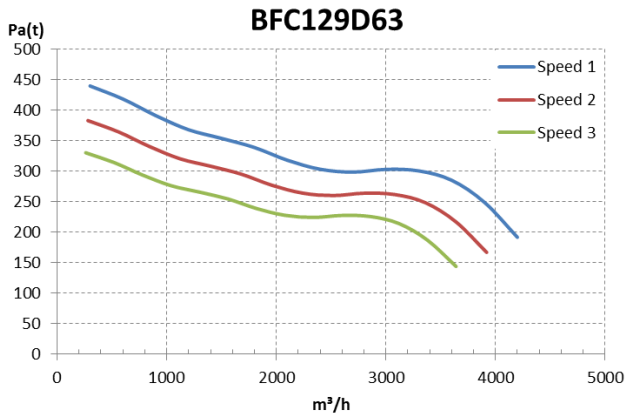
## Performance Data



BFC 77 & 88 fans available in 3 speeds on special request.







### Wirina Diagrams:

Models: D43 & D63



Models: D41 & D61

