

Xpelair GX6, GX9 & GX12

Commercial window fans



Key features

Type:	Commercial duty ventilation unit
Application:	Pubs, restaurants, offices, kitchens, factories, schools and shops
Control options:	Extensive range of optional controllers available
Legislation:	Conforms to Building Regulations
Hole diameter:	203mm (GX6 wall) 184mm (GX6 window) 257mm (GX9 window) 324mm (GX12 window) 266mm (GX9 wall) 330mm (GX12 wall)



The Range

Tried and tested, the Xpelair **GX6**, **GX9** and **GX12** window fans have remained a byword for commercial window fans for over forty years. The latest **GX** range is no exception – continuing that reputation for rugged reliability, whilst introducing a host of refinements to make the range safer, faster to install and easier to clean. Now supplied with longer ladder strips.

The contoured high gloss white housing is styled to blend in cleanly with modern décor. A shadow grey external grille is supplied for unobtrusive external appearance. For safety, a finger guard is integrated into the housing and the window grille design. On **GX9** & **GX12** range units, a tamper proof positive plug and socket assembly provides a means of isolation for service access without the safety risk of accidental disconnection.

Installation in single and sealed double glazed windows (up to 25mm) is rapid using Xpelair's unique metal ladder strip / screw system, ensuring a secure and watertight seal against the glass.

Both the **GX9** & **GX12** ranges are reversible and now feature totally enclosed external rotor motors providing constant volume outputs, even in gusty external conditions. Pre-balanced sickle bladed impellers eliminate 'fan judder' and ensure quiet trouble free operation. Sealed for life maintenance free bearings ensure suitability for running at any angle. Running costs are impressively low, and when not in use the silent electro-thermal shutter cassette closes silently against backdraughts. And cleaning has never been easier. The housing, shutter cassette and impeller are all removed in seconds.

Models

GX6

- Ref. 90800AW**
- 6" high performance extract axial ventilation unit
 - Operated by remote On/Off switch (not supplied)
 - Suitable for single and sealed double glazing windows and panels up to 25mm
 - Sealed for life maintenance free bearings, suitable for running at any angle. Integrated safety thermal overload protection
 - Built-in silent action electro-thermal shutter cassette
 - Passive tricklevent facility for background ventilation with fan Off
 - Easy clean high gloss ABS housing with integral finger safety guard
 - Shadow grey external grille for unobtrusive external appearance
 - Unique metal ladderstrip / screw connection to external grille for security and weather tight seal

GX9

- Ref. 89994AW**
- GX12**
- Ref. 90012AW**
- High performance intake/extract axial ventilation unit
 - Choice of optional controllers
 - Suitable for single and sealed double glazing windows and panels up to 25mm
 - Balanced external rotor motor and impeller for quiet efficiency
 - Sealed for life maintenance free bearings, suitable for running at any angle
 - Built-in silent action electro-thermal shutter cassette
 - Passive tricklevent facility for background ventilation with fan Off
 - Easy clean high gloss ABS housing with integral finger safety guard
 - Shadow grey external grille for unobtrusive external appearance
 - Tamperproof internal connection safety plug and socket
 - Unique metal ladderstrip / screw connection to external grille for security and weather tight seal

Controllers

Single Fan Controller FR22/30

- Ref. 21868AW**
- For use with GX9 and GX12
 - On/Off control with neon indicator. Used to select between high and low speed, intake and extract

Group Fan Controller EC6H

- Ref. 21854AW**
- For use with GX9 and GX12
 - On/Off control with neon indicator. Infinitely variable speed selection controls extract and intake air flow. For use with up to four fans (not mixed sizes)

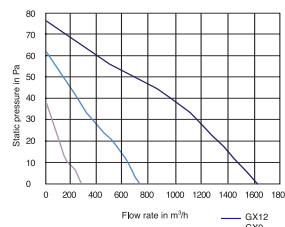
Group Fan Controller XCC1

- Ref. 21859AW**
- For use with GX9 and GX12
 - On/Off control with neon indicator

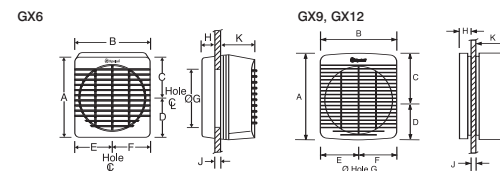


Typical Specifications on page 153.
Wiring Diagrams on page 167.

Performance



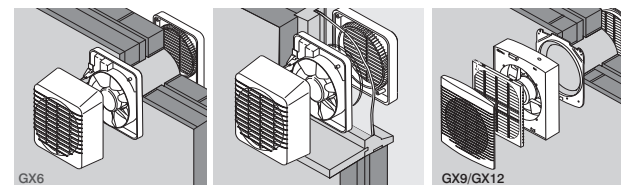
Dimensions



Model	Dimensions (mm)										
	A	B	C	D	E	F	G	H	J	K	
GX6	226	210	119	107	109	101	184/203	32	4-25	112	
GX9	312	294	165	147	147	147	257/266	32	4-25	117	
GX12	408	380	216	192	190	190	324/330	34	4-25	161	

Installation and Accessories

The **GX6**, **GX9** & **GX12** ranges come complete with a universal mounting kit for window installations.



GX9 unit can be used for a variety of medical and photographic applications where light protection is required by replacing the external grille with a Darkroom Cowl.

Wall Mounting	Window Mounting	Wall Mounting	Darkroom installation
Hole diameter: 203mm	Hole diameter: 184mm (GX6) 257mm (GX9) 324mm (GX12)	Hole diameter: 266mm (GX9) 330mm (GX12)	
Installation Accessories		Installation Accessories	Installation Accessories
Wall Kit 260mm Ref. 89370AA		Wall Kit Ref. 89372AA (GX9) Wall Kit Ref. 89374AA (GX12)	Darkroom Cowl DC9 Ref. 98409AK